

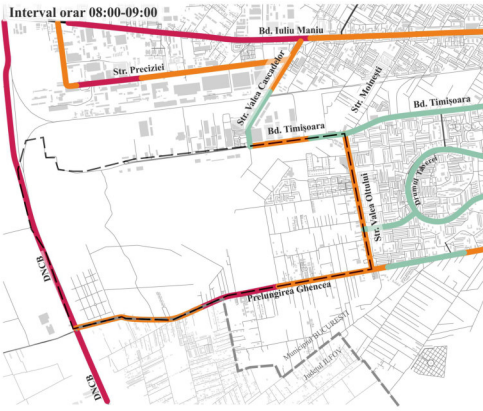
P.U.Z. ZONA 17 | STUDIU DE FUNDAMENTARE

ÎNCADRARE ÎN TERITORIU

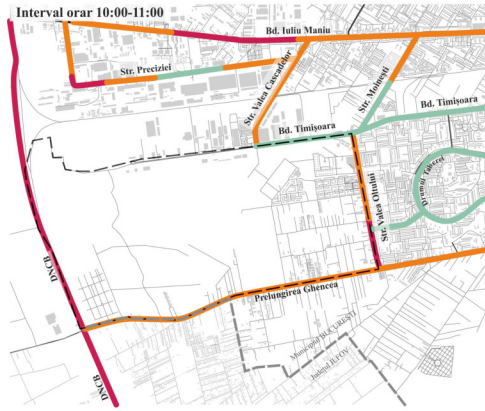
DATE DE IDENTIFICARE TEREN:

Delimitat de: Str. Valea Oltului, B-dul Timișoara, Prelungirea Ghencea, Șoseava de centură Suprafață cca. 500 ha
Sectorul 6, Municipiul București

A.1.4.-ANALIZA TRAFICULUI

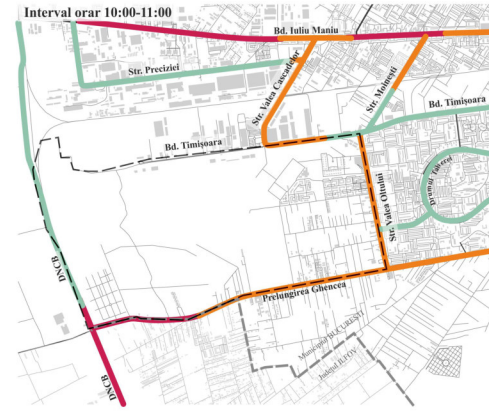


Trafic rapid ——— Trafic lent

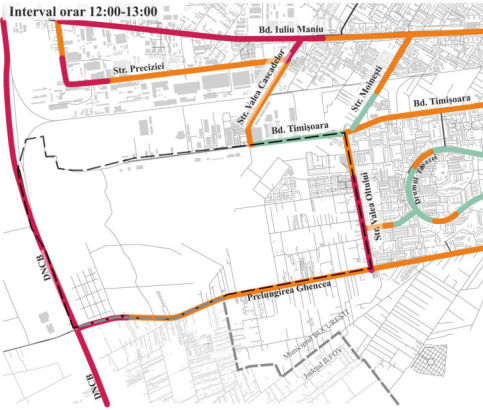


Trafic rapid ——— Trafic lent

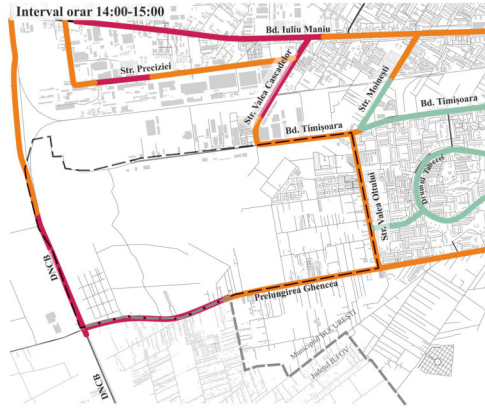
INTENSITATEA TRAFICULUI ÎN WEEKEND



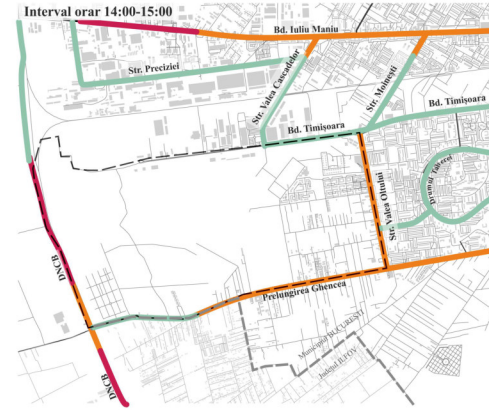
Trafic rapid ——— Trafic lent



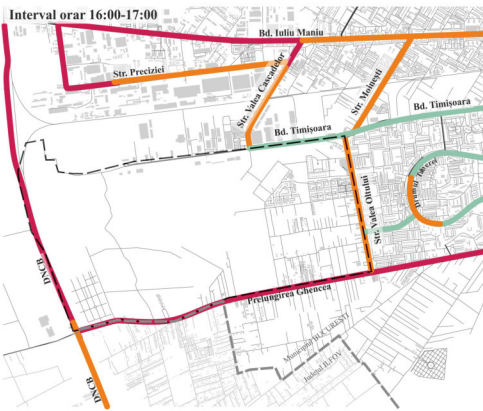
Trafic rapid ——— Trafic lent



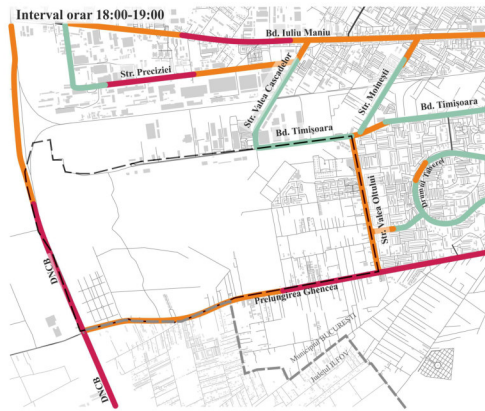
Trafic rapid ——— Trafic lent



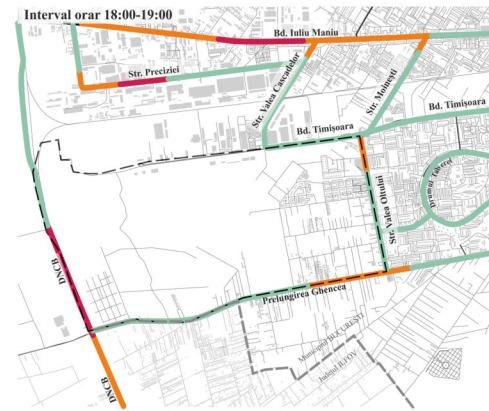
Trafic rapid ——— Trafic lent



Trafic rapid ——— Trafic lent



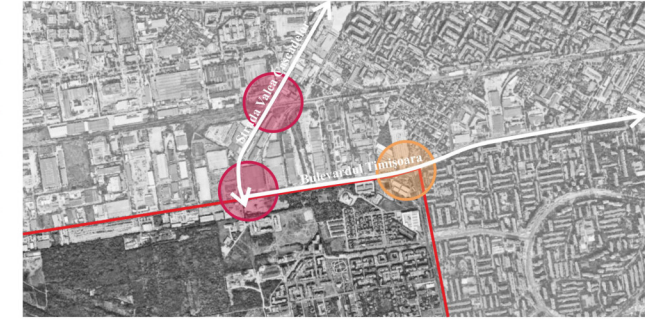
Trafic rapid ——— Trafic lent



Trafic rapid ——— Trafic lent

ZONE CU AGLOMERĂRI DE TRAFIC

Strada Valea Cascadelor - Bulevardul Timișoara



Strada Valea Oltului - Prelungirea Ghencea



Prelungirea Ghencea - DNCB



LEGENDA

- Limită teren ce a generat P.U.Z.
- Trafic mediu în orele de vârf (8:00-10:00, 16:00-18:00)
- Trafic intens în orele de vârf (8:00-10:00, 16:00-18:00)

BENEFICIAR	
PRIMĂRIA SECTORULUI 6 MUNICIPIUL BUCUREȘTI	
PLAN URBANISTIC ZONAL, ZONA 17 SECTOR 6, MUNICIPIUL BUCUREȘTI	
SPECIALITATEA	FAZA DE PROIECTARE
URBANISM	STUDIU DE FUNDAMENTARE
PROIECT NR.	Seria
	No. Planul
	A.1.4
TITLU PLANȘĂ	
ANALIZA TRAFICULUI	
	DATA
	decembrie 2021