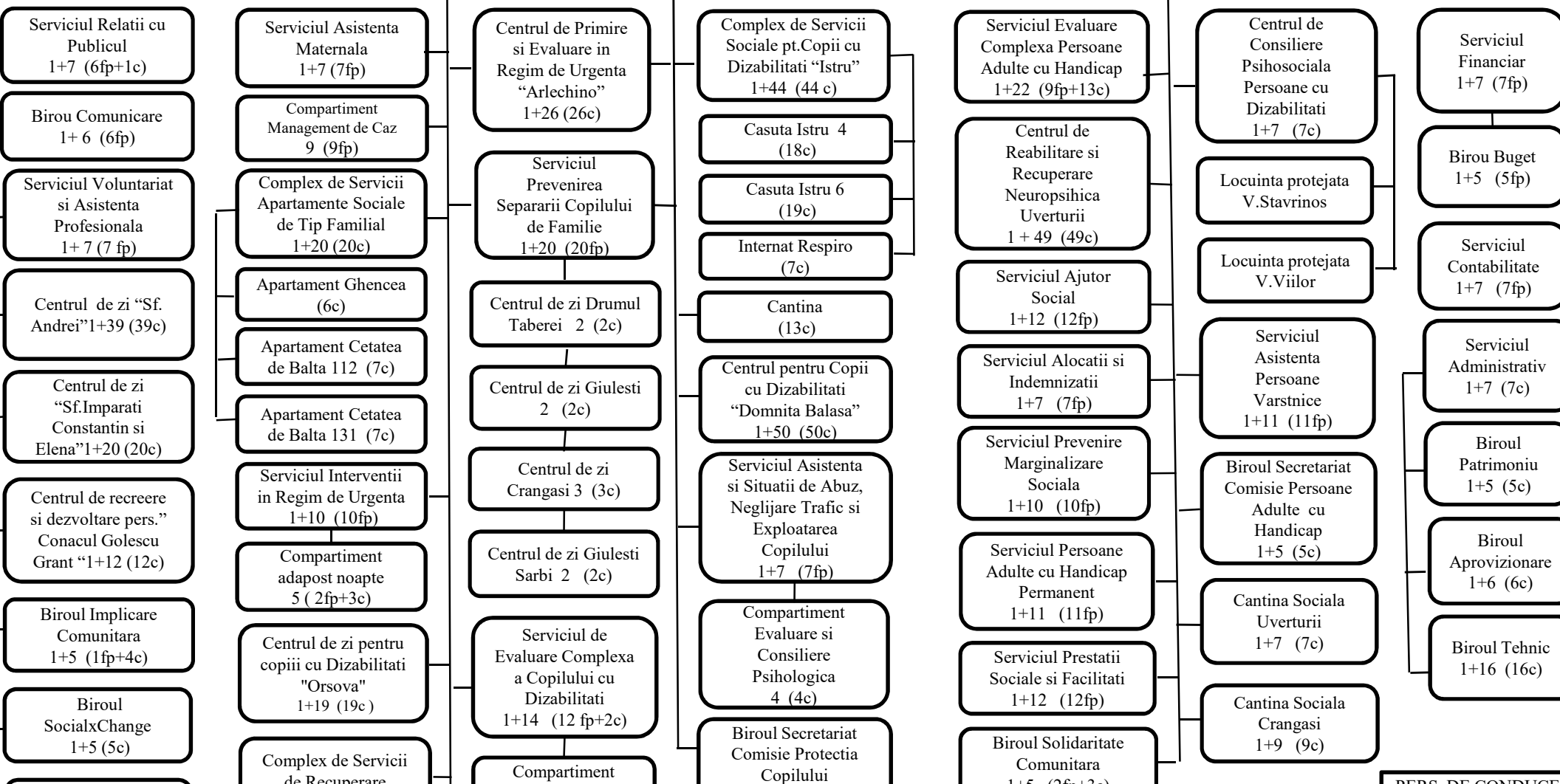
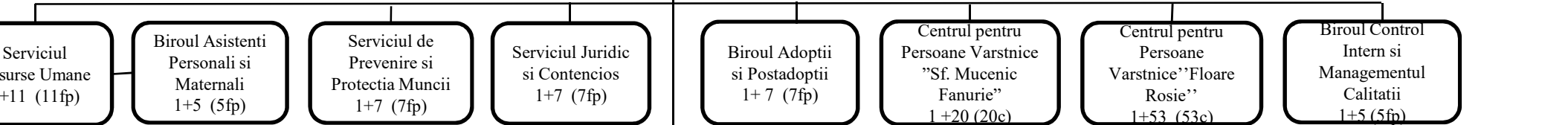


DIRECTIA GENERALA DE ASISTENTA SOCIALA SI PROTECTIA COPILULUI
DIRECTOR GENERAL

1 + 1105 (355 personal de specialitate + 750 personal centre)

Centrul de sanatate multifunctional "Sf.Nectarie" *

* Unitate sanitara juridica aflata in subordinea



PERSONAL DE CONDUCERE